

BARRIER-FREE TUB / SHOWER

Oasis®



ADA COMPLIANT PACKAGE

TSEW-6032ABF / ADA03

Rough-In Dimensions

60" wide x 33-1/4" deep x 77-1/2" high

Finished Dimensions

60" wide x 32" deep x 76-1/4" high

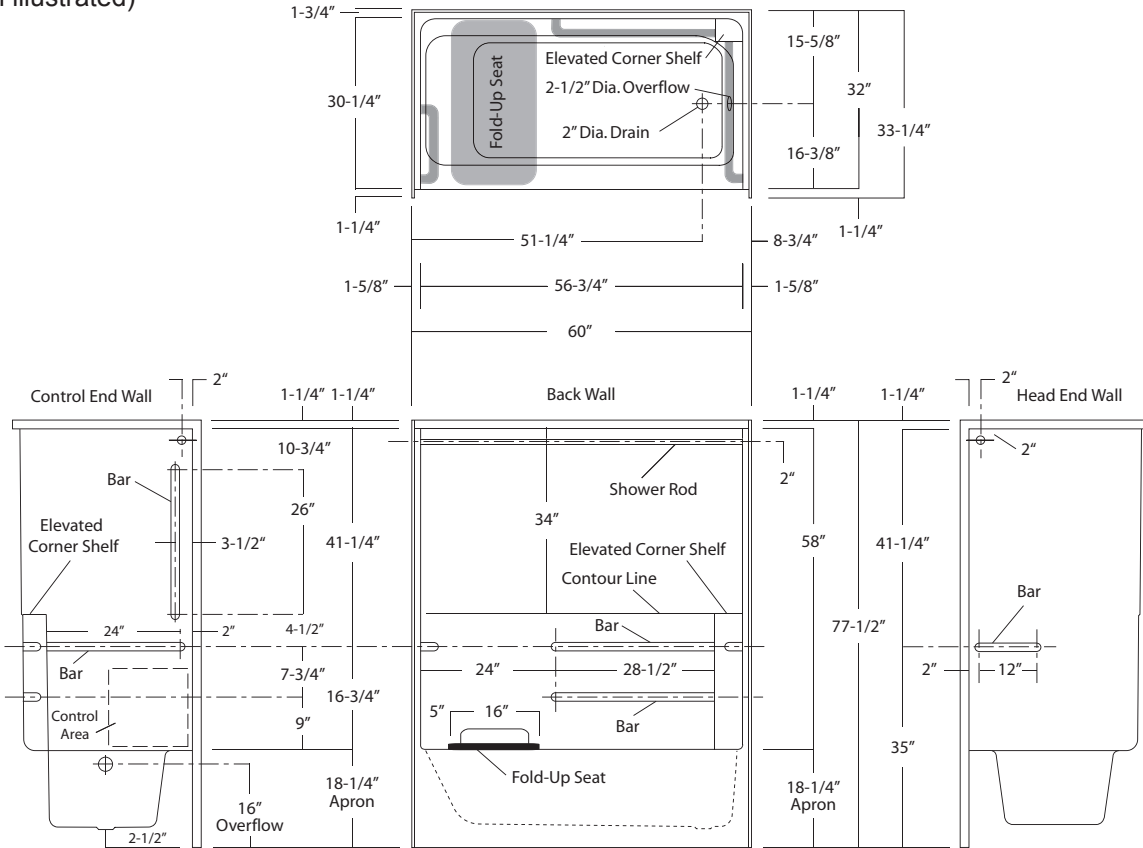
Unit Features

- One - Piece Fiberglass Composite Construction
- Sanitary Grade Polyester Gelcoat Surface
- 2" Dia. Drain / RH or LH (see reverse side for location)
- 2-1/2" Dia. Overflow (see reverse side for location)
- Single / Elevated Corner Shelf (at drain end)
- Textured Floor Pattern
- Balsa Wood Core Floor Structure

Special Notes

- Additional Drain Clearance for Piping
- Factory Applied, Composite Encased, Reinforcement
- Factory Installed, ADA Compliant Bar Configuration
- Factory Installed, ADA Compliant Folding Seat w/ Friction Hinge
- Factory Installed, 1" Dia. Stainless Steel Shower Rod
- Concealed Tamper-Proof Seat, Bar, & Rod Attachments
- Package Complies with ANSI-A117.1-2003 Standard (ADA Compliance)

TSEW-6032ABF / ADA03
(right drain illustrated)



This package is configured for use with a shower curtain.
This package incorporates flangless, brushed stainless steel bars with concealed tamper-proof connections.

Tub/Shower Package

Order No.: TSEW-6032ABFR / ADA03
(RH Drain / ADA Compliant Pkg)
TSEW-6032ABFL / ADA03
(LH Drain / ADA Compliant Pkg)

60" x 32", One-piece gelcoated fiberglass tub/
shower with 18-1/4" apron, structurally reinforced
wall and seat areas with drain on end indicated,
and factory installed ANSI-A117.1-2003 compliant
(ADA) package.

Package includes:

- ◆ (4), 1-1/2" dia. stainless steel horizontal assist bars
- ◆ (1), 1-1/2" dia. stainless steel vertical assist bar
- ◆ (1), Rectangular, folding (phenolic) seat with stainless steel frame and white laminate top
- ◆ (1), 1" dia. stainless steel shower rod

Dimensions shown are maximum. Due to the nature of the materials involved, actual unit dimensions can vary (tolerances: +0 / -3/8 inch).