

# VURSA kd SERIES SHOWER

**Oasis**

SH3P-MD-6032R / TL-LS package shown



MULTI-PIECE MODEL

**SH3P-MD-6032** (3-pc / End Drain / Minimal Dam)

Rough-In Dimensions

60" wide x 33-1/4" deep x 78-3/4" high

Finished Dimensions

60" wide x 32" deep x 77-1/2" high

Unit Features



- Three - Piece Fiberglass Composite Construction
- Sanitary Grade Polyester Gelcoat Surface
- Front-Side Installation With Minimal Sealant Requirements
- 3-3/8" Dia. End Drain
- 1/2" Threshold To Aid In Keeping Water Within Confines of Unit
- Contoured Threshold To Aid Entry And Exit
- Corner Accessory Ledge
- Generous, Multi-Level Back Wall Shelving
- Wall Design Accommodates Grab Bar Applications
- 1" Floor Flange To Secure Unit Along Threshold
- Textured Floor Pattern
- Balsa Wood Core Floor Structure

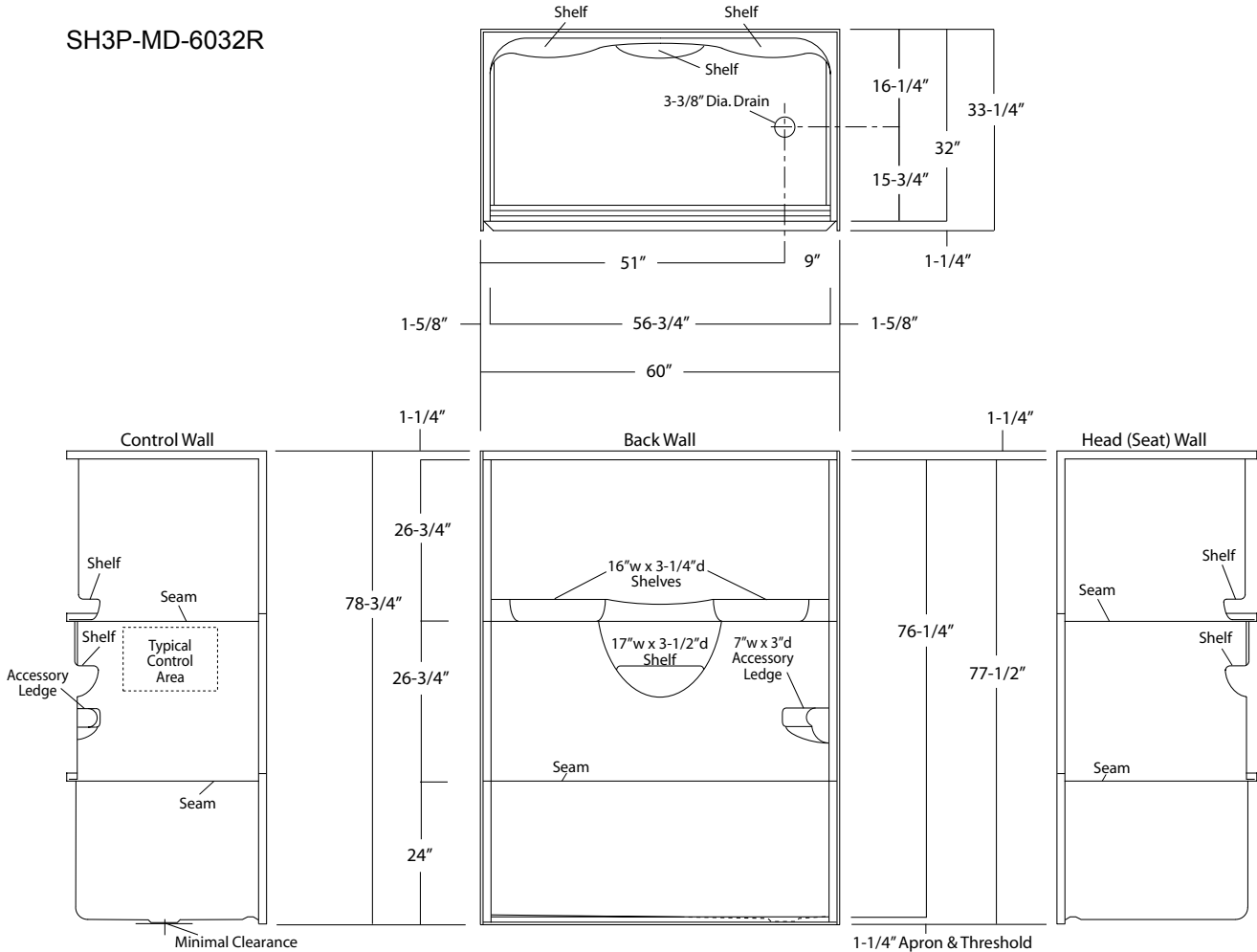
Special Notes

- 'QwikClic' Technology (Patents Pending)
- 5-Year Module Warranty
- Bar Configurations Available Beyond Listed Packages

Order No.: SH3P-MD-6032R (RH drain-Minimal Dam)  
 SH3P-MD-6032L (LH drain-Minimal Dam)

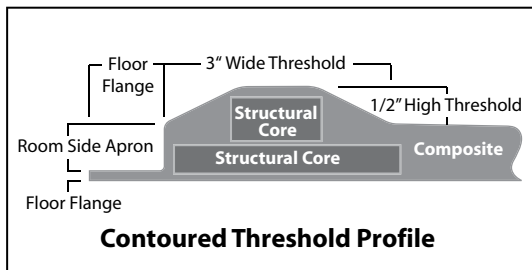
60" x 32", 3-piece gelcoated fiberglass shower with 'QuikClic', front side installation, multi-level back wall shelves, corner accessory ledge, minimal dam for barrier-free entry, and drain on end indicated.

SH3P-MD-6032R



**Enclosure Size:** Not recommended due to barrier-free application.

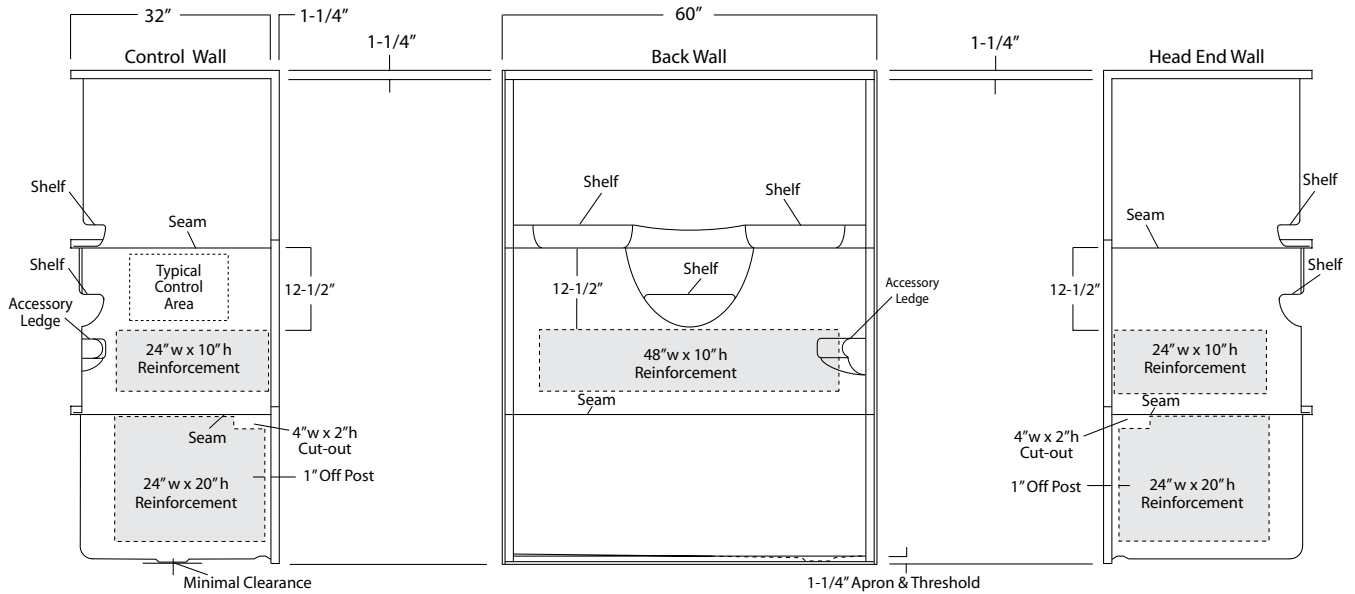
**Floor Area:** 1602 sq. in.



**Package Order No.: FH (Fair Housing wall reinforcement)**

Package Includes: Factory applied, HUD-FHA compliant (Fair Housing), structurally reinforced wall areas (as shown) for the independent field application of bars.

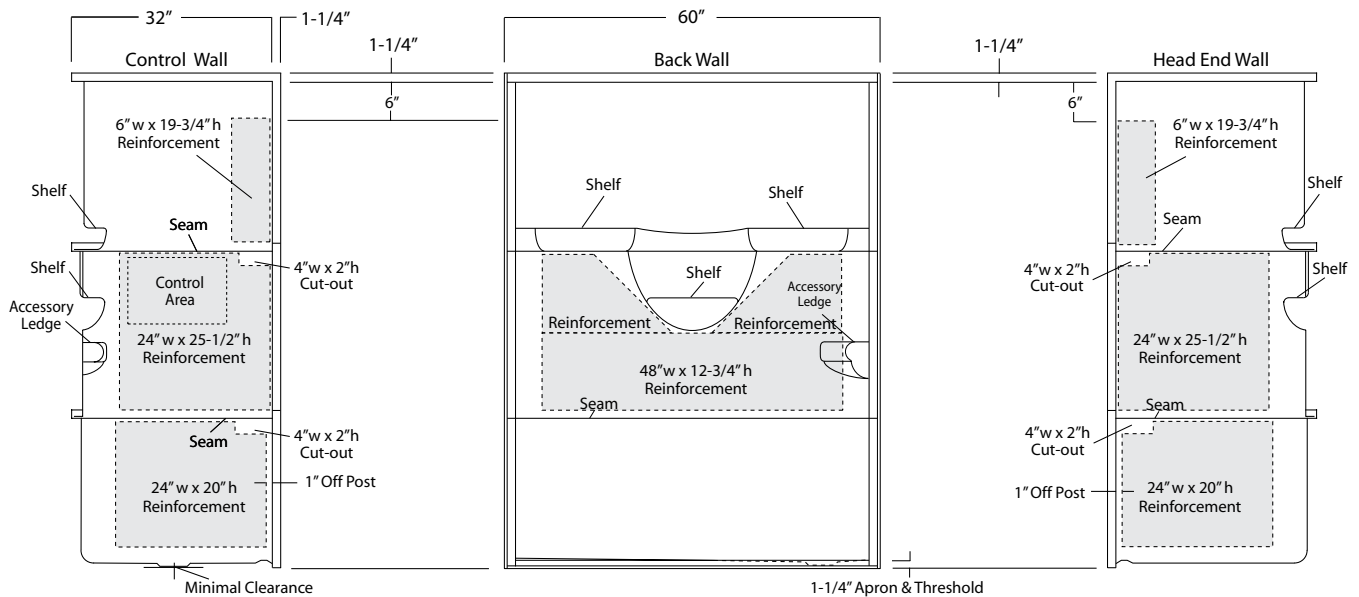
NOTE: Factory installed stainless steel shower curtain rod available.



**Package Order No.: 3SM (3-side, mid-level wall reinforcement)**

Package Includes: Factory applied, 3-side, mid-level, structurally reinforced wall areas (as shown), exceeding 'Fair Housing' (HUD/FHA) requirements.

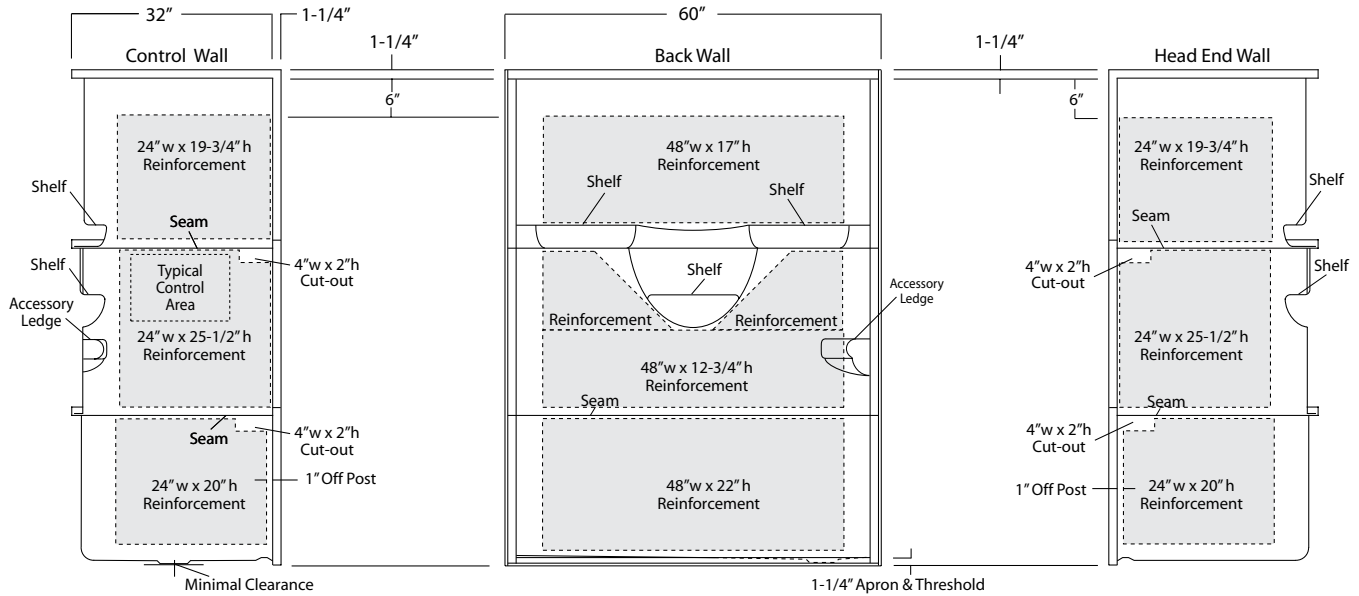
NOTE: Factory installed stainless steel shower curtain rod and bar packages available using 3SM reinforcement.



**Package Order No.: 3SF (3-side, full-wall reinforcement)**

Package Includes: Factory applied, 3-side, full-wrap, structurally reinforced wall areas (as shown), exceeding 'Fair Housing' (HUD/FHA) requirements, for the independent field application of bars.

NOTE: Factory installed stainless steel shower curtain rod and bar packages available using 3SF reinforcement.

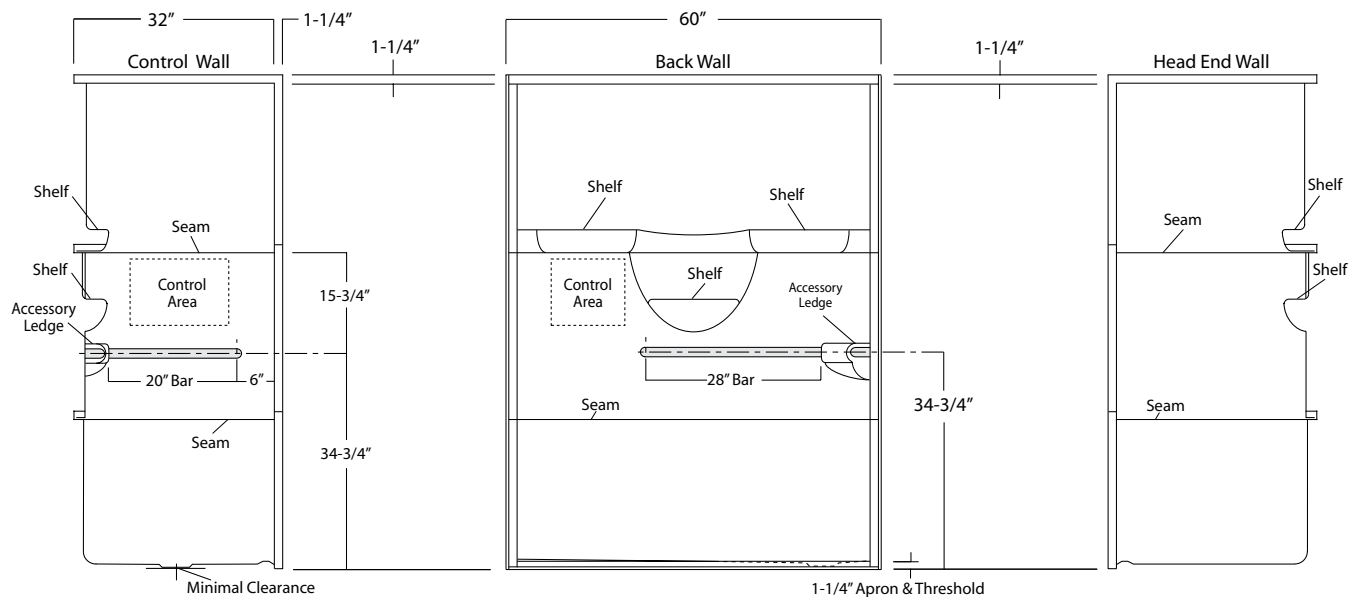


- Package Order No.:** BP1-60 (1-1/2" dia., stainless steel, 2-bar only package)  
**Upgrade Package No.:** BP1-60 WHT (1-1/4" dia., white powder coat, 2-bar only package)  
 BP1-60 OFW (1-1/4" dia., off-white powder coat, 2-bar only package)  
 BP1-60 SNK (1-1/4" dia., satin nickel, 2-bar only package)

Package Includes: Factory installed, 1-1/2" dia. stainless steel, 2-bar package with basic reinforcement for components (as shown).

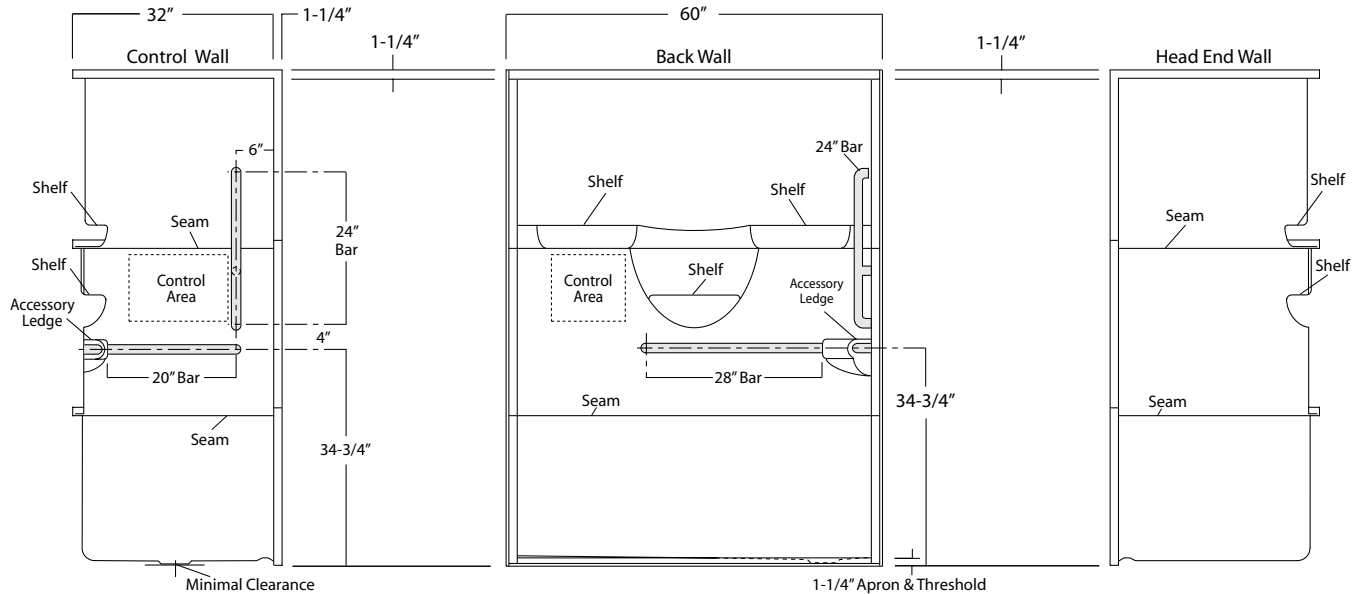
NOTE: Enhanced reinforcement available, see 3SM & 3SF packages.

NOTE: Factory installed stainless steel shower curtain rod available.



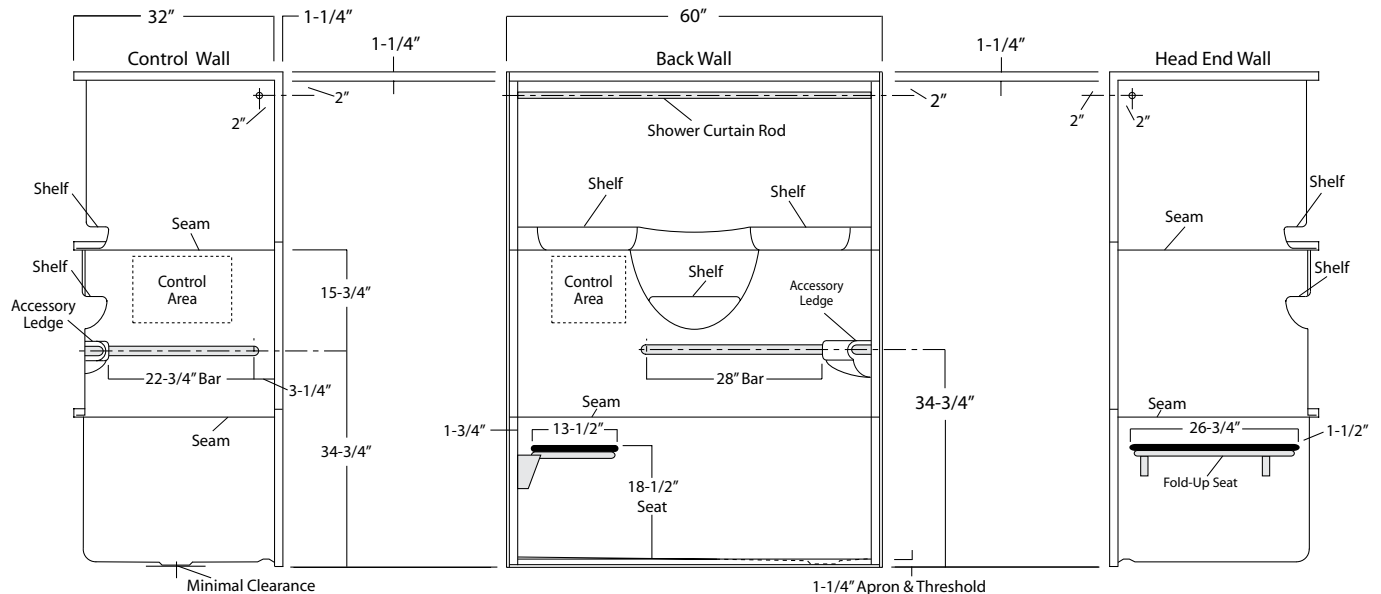
**Package Order No.:** BP2-60 (3-bar only package)  
**Upgrade Package No.:** BP2-60 WHT (1-1/4" dia., white powder coat, 3-bar only package)  
 BP2-60 OFW (1-1/4" dia., off-white powder coat, 3-bar only package)  
 BP2-60 SNK (1-1/4" dia., satin nickel, 3-bar only package)

Package Includes: Factory installed, 1-1/2" dia. stainless steel, 3-bar package with basic reinforcement for components (as shown).  
 NOTE: Enhanced reinforcement available, see 3SM & 3SF packages.  
 NOTE: Factory installed stainless steel shower curtain rod available.



**Package Order No.:** TL-LS (RH drain-LH seat package)  
 TL-RS (LH drain-RH seat package)

Package Includes: Factory installed, 1-1/2" dia. stainless steel, 2-bar package, 1" dia. shower rod, and side wall folding seat, with basic reinforcement for components (as shown).  
 NOTE: Enhanced reinforcement available, see 3SM & 3SF packages.  
 NOTE: Shower curtain rod may be deleted upon request.



Photographic images may include optional components and appear different than actual product.  
 Dimensions shown are maximum. Due to the nature of the materials involved, actual unit dimensions can vary (tolerances: +0 / -3/8 inch).  
 Oasis reserves the right to modify or discontinue product and/or associated equipment without prior written or verbal notification or obligation.