

VURSA kd SERIES
TUB/SHOWER

Oasis®

TS3P-6032R ABF / BP2-60 shown



MULTI-PIECE MODEL

TS3P-6032 (3-piece)

Rough-In Dimensions

60" wide x 33-1/4" deep x 77-1/2" high (w/ 16-inch apron)

Finished Dimensions

60" wide x 32" deep x 76-1/4" high (w/ 16-inch apron)

Unit Features



- Three - Piece Fiberglass Composite Construction
- Sanitary Grade Polyester Gelcoat Surface
- Front-Side Installation With Minimal Sealant Requirements
- 2" Dia. End Drain
- 2-1/2" Dia. Overflow
- Apron Drip Ledge Minimizes Water Migration
- Corner Accessory Ledge
- Generous, Multi-Level Back Wall Shelving
- Wall Design Accommodates Grab Bar Applications
- Textured Floor Pattern
- 1/2-inch Balsa Wood Core Floor Structure

Special Notes

- Optional ABF Unit (provides 3-inches of drain clearance)
- UL Listed Whirlpool System Available
- 'QwikClic' Technology (Patents Pending)
- 5-Year Module Warranty
- ANSI Standard Certification
- Bar Configurations Available Beyond Listed Packages

Order No.: TS3P-6032R (RH drain / 16" apron)
 TS3P-6032L (LH drain / 16" apron)

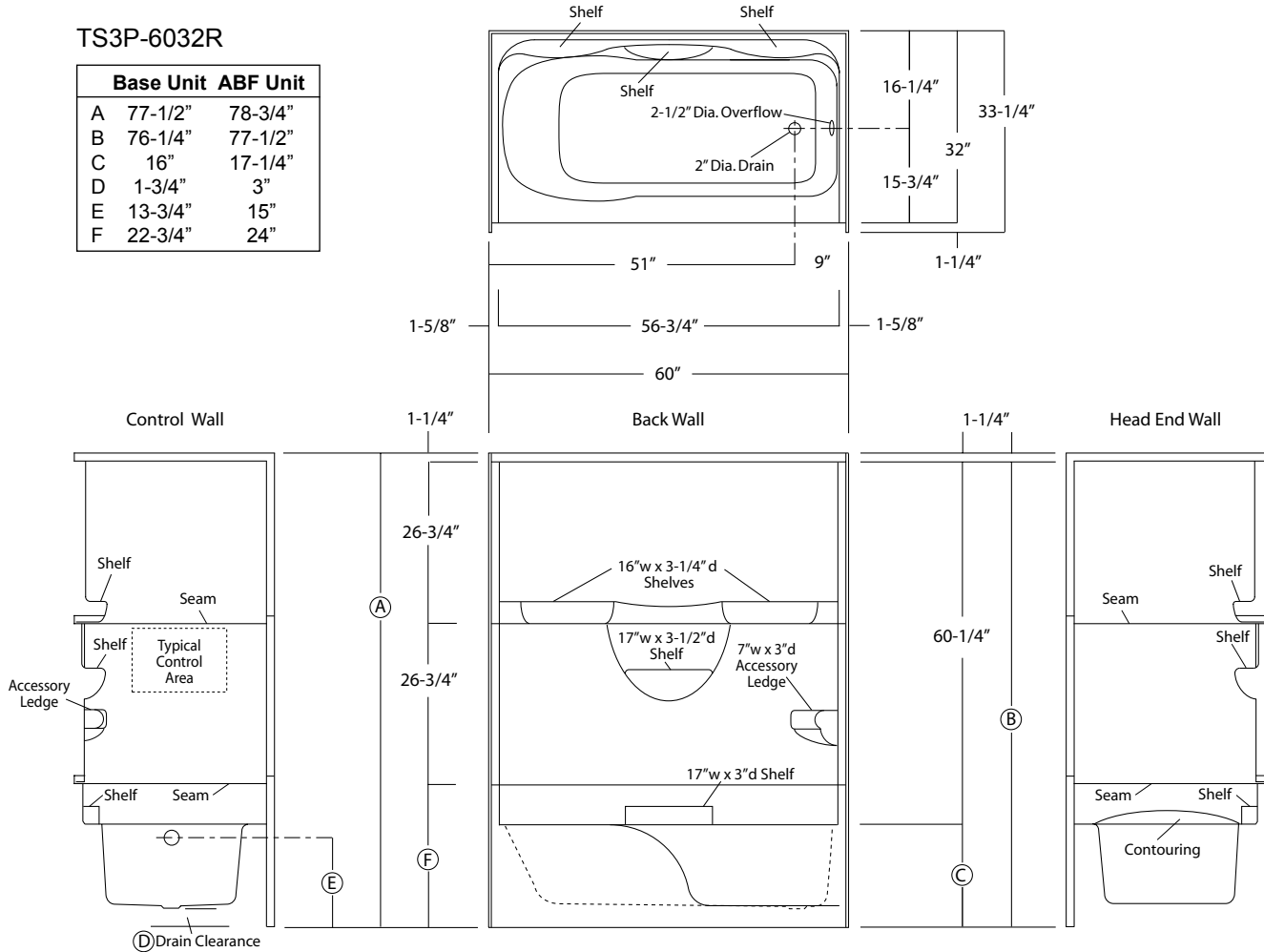
Order No.: TS3P-6032R ABF (RH drain / 17-1/4" apron)
 TS3P-6032L ABF (LH drain / 17-1/4" apron)

60" x 32", 3-piece gelcoated fiberglass tub/shower with 'QuikClic', front side installation, multi-level back wall shelves, corner accessory ledge, contoured neck rest, and drain on end indicated.

NOTE: Base unit provides 1-3/4" drain clearance, ABF unit provides 3" drain clearance.

TS3P-6032R

	Base Unit	ABF Unit
A	77-1/2"	78-3/4"
B	76-1/4"	77-1/2"
C	16"	17-1/4"
D	1-3/4"	3"
E	13-3/4"	15"
F	22-3/4"	24"



Enclosure Size: 56-3/4" w (max) x 60-1/4" h (max)

Package Order No.: 6P (whirlpool system)

Package includes: 6, adjustable jets, twin air injection controls, pneumatic on/off control, and 5.5 amp pump/motor.

NOTE: 6P system available with various reinforcement and component packages.

System In-Line Heater (factory installed) (order code ILH)

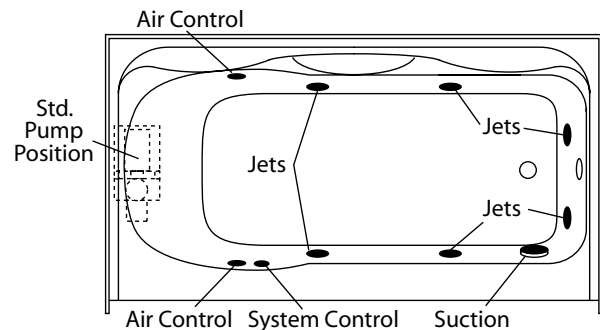
Options: Ozone Generator (factory installed) (order code OZG)

A removable access panel is currently not available for this model.

Sump Dimensions: 51" long x 22" wide

Sump Depth: 13-1/4" (at tub center)

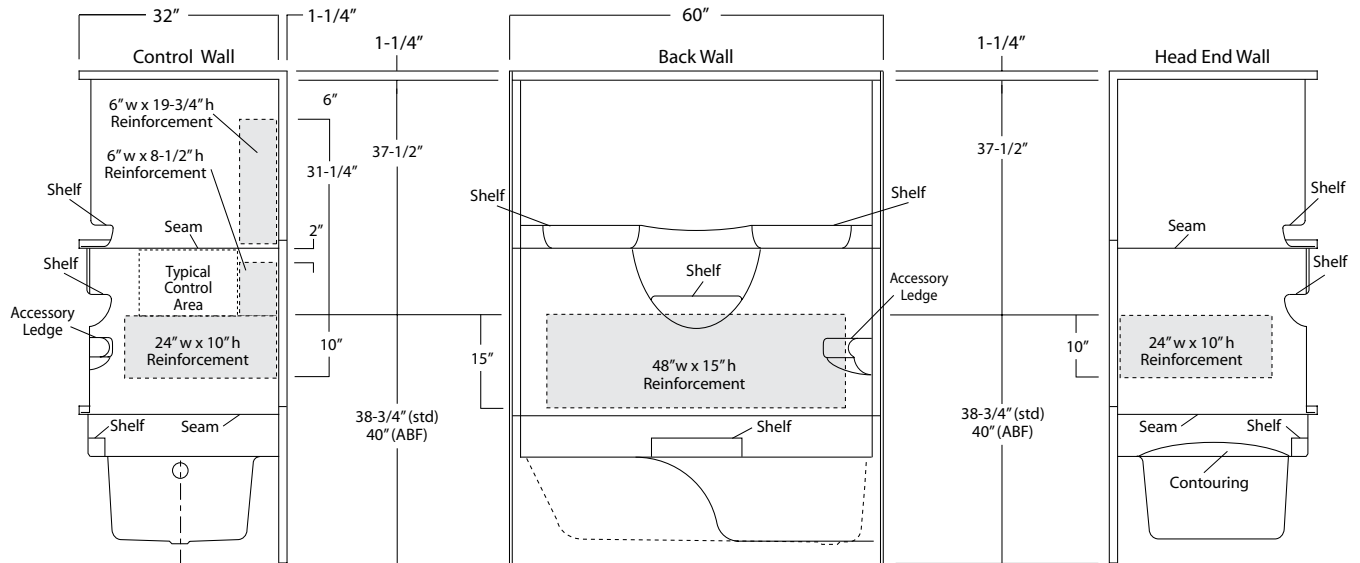
Sump Capacity: 42 gal. to overflow (unoccupied)



Package Order No.: FH (Fair Housing wall reinforcement)

Package Includes: Factory applied, HUD-FHA compliant (Fair Housing), structurally reinforced wall areas (as shown) for the independent field application of bars.

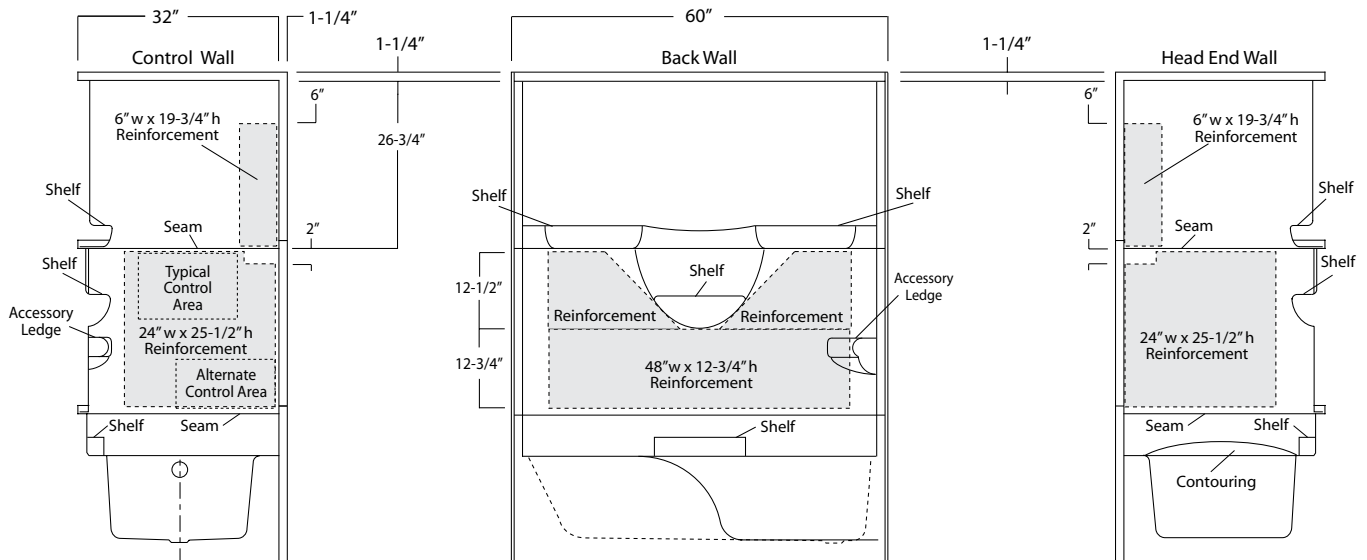
NOTE: Factory installed stainless steel shower curtain rod available.



Package Order No.: 3SM (3-side, mid-level wall reinforcement)

Package Includes: Factory applied, 3-side, mid-level, structurally reinforced wall areas (as shown), exceeding 'Fair Housing' (HUD/FHA) requirements.

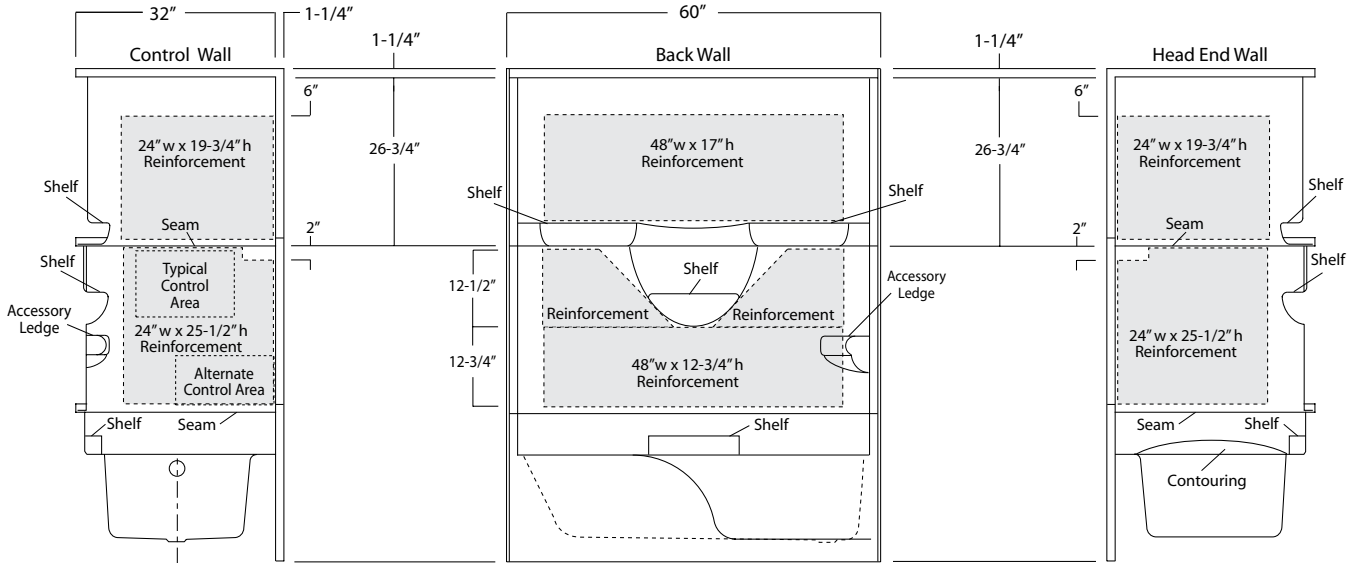
NOTE: Factory installed stainless steel shower curtain rod and bar packages available using 3SM reinforcement.



Package Order No.: 3SF (3-side, full-wall reinforcement)

Package Includes: Factory applied, 3-side, full-wrap, structurally reinforced wall areas (as shown), exceeding 'Fair Housing' (HUD/FHA) requirements, for the independent field application of bars.

NOTE: Factory installed stainless steel shower curtain rod and bar packages available using 3SF reinforcement.

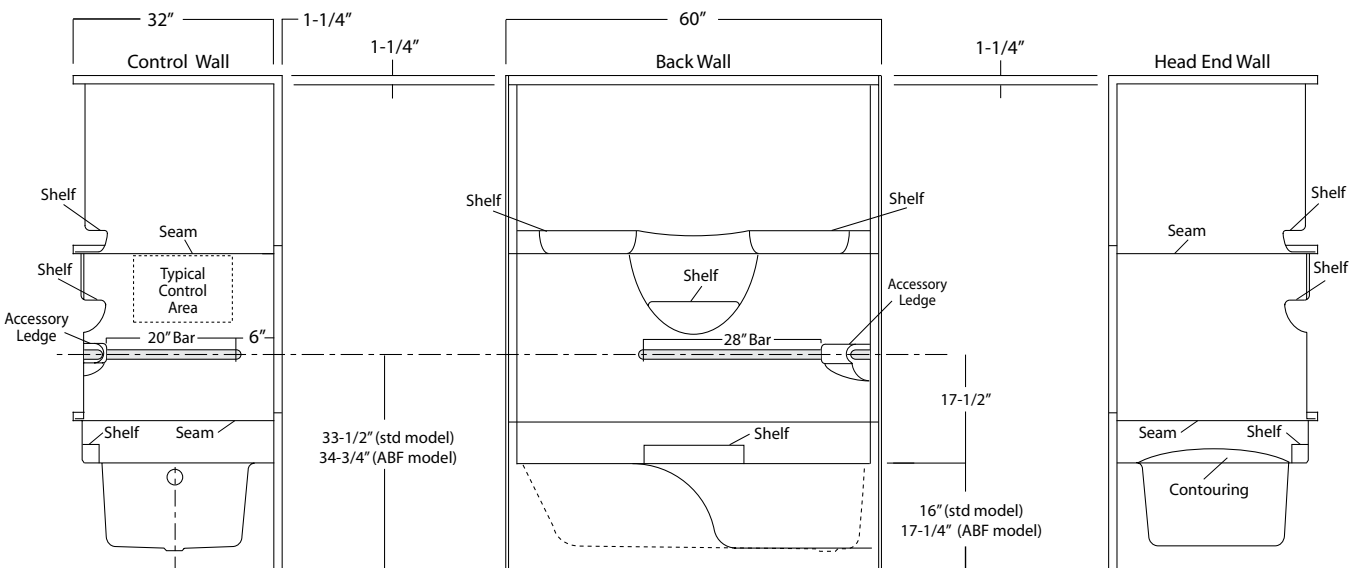


- Package Order No.:** BP1-60 (1-1/2" dia., stainless steel, 2-bar only package)
Upgrade Package No.: BP1-60 WHT (1-1/4" dia., white powder coat, 2-bar only package)
 BP1-60 OFW (1-1/4" dia., off-white powder coat, 2-bar only package)
 BP1-60 SNK (1-1/4" dia., satin nickel, 2-bar only package)

Package Includes: Factory installed, 1-1/2" dia. stainless steel, 2-bar package with basic reinforcement for components (as shown).

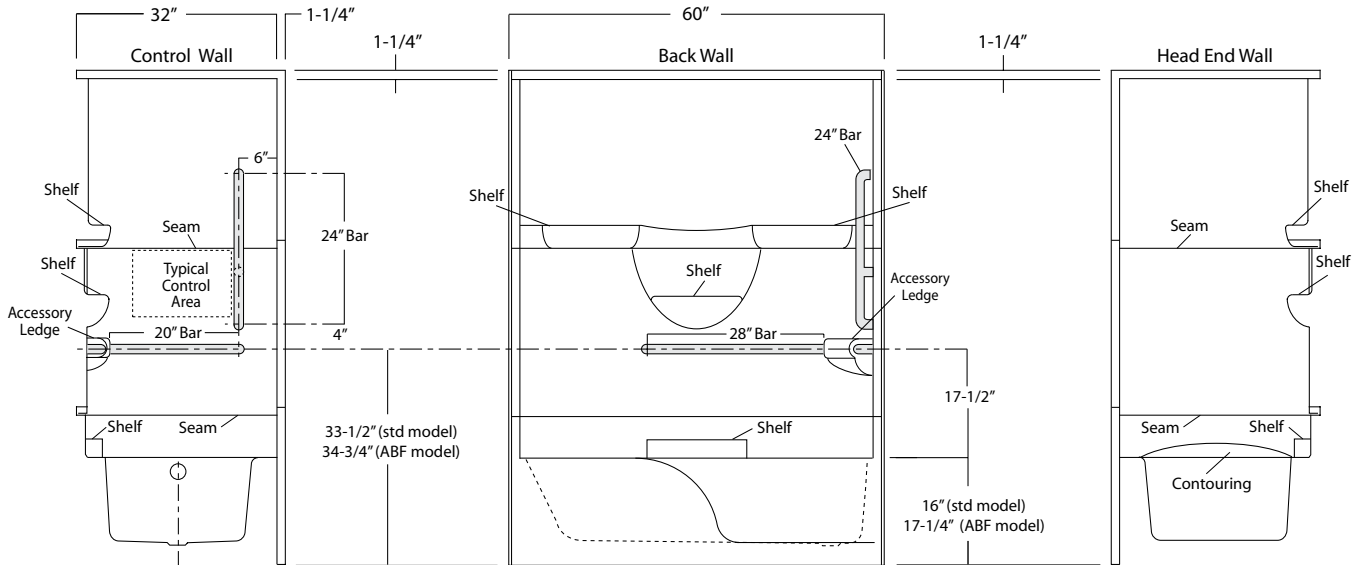
NOTE: Enhanced reinforcement available, see 3SM & 3SF packages.

NOTE: Factory installed stainless steel shower curtain rod available.



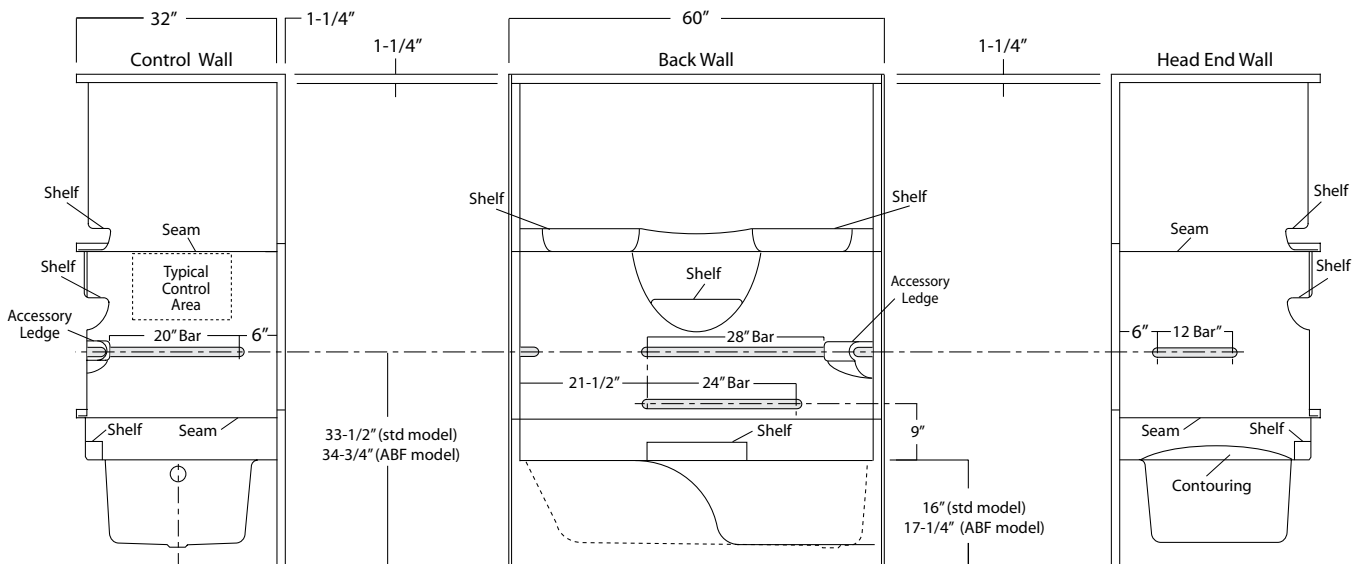
Package Order No.: BP2-60 (3-bar only package)
Upgrade Package No.: BP2-60 WHT (1-1/4" dia., white powder coat, 3-bar only package)
 BP2-60 OFW (1-1/4" dia., off-white powder coat, 3-bar only package)
 BP2-60 SNK (1-1/4" dia., satin nickel, 3-bar only package)

Package Includes: Factory installed, 1-1/2" dia. stainless steel, 3-bar package with basic reinforcement for components (as shown).
 NOTE: Enhanced reinforcement available, see 3SM & 3SF packages.
 NOTE: Factory installed stainless steel shower curtain rod available.



Package Order No.: 4BAR (4-bar only package)
Upgrade Package No.: 4BAR WHT (1-1/4" dia., white powder coat, 4-bar only package)
 4BAR OFW (1-1/4" dia., off-white powder coat, 4-bar only package)
 4BAR SNK (1-1/4" dia., satin nickel, 4-bar only package)

Package Includes: Factory installed, 1-1/2" dia. stainless steel, 4-bar package with basic reinforcement for components (as shown) (replicates ADA94 bar configuration less seat and shower rod).
 NOTE: Enhanced reinforcement available, see 3SM & 3SF packages.
 NOTE: Factory installed stainless steel shower curtain rod available.

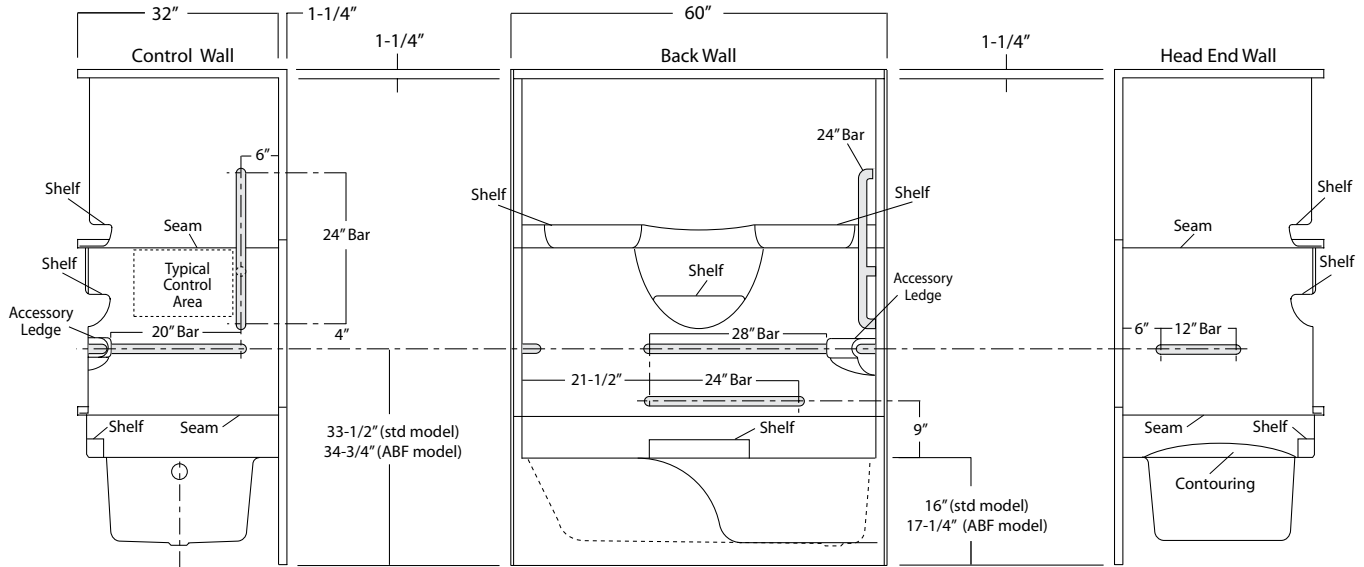


Package Order No.: 5BAR (5-bar only package)
Upgrade Package No.: 5BAR WHT (1-1/4" dia., white powder coat, 5-bar only package)
5BAR OFW (1-1/4" dia., off-white powder coat, 5-bar only package)
5BAR SNK (1-1/4" dia., satin nickel, 5-bar only package)

Package Includes: Factory installed, 1-1/2" dia. stainless steel, 5-bar package with basic reinforcement for components (as shown) (replicates ADA03 bar configuration less seat and shower rod).

NOTE: Enhanced reinforcement available, see 3SM & 3SF packages.

NOTE: Factory installed stainless steel shower curtain rod available.



Package Order No.: ADA94 (ADA compliant package)

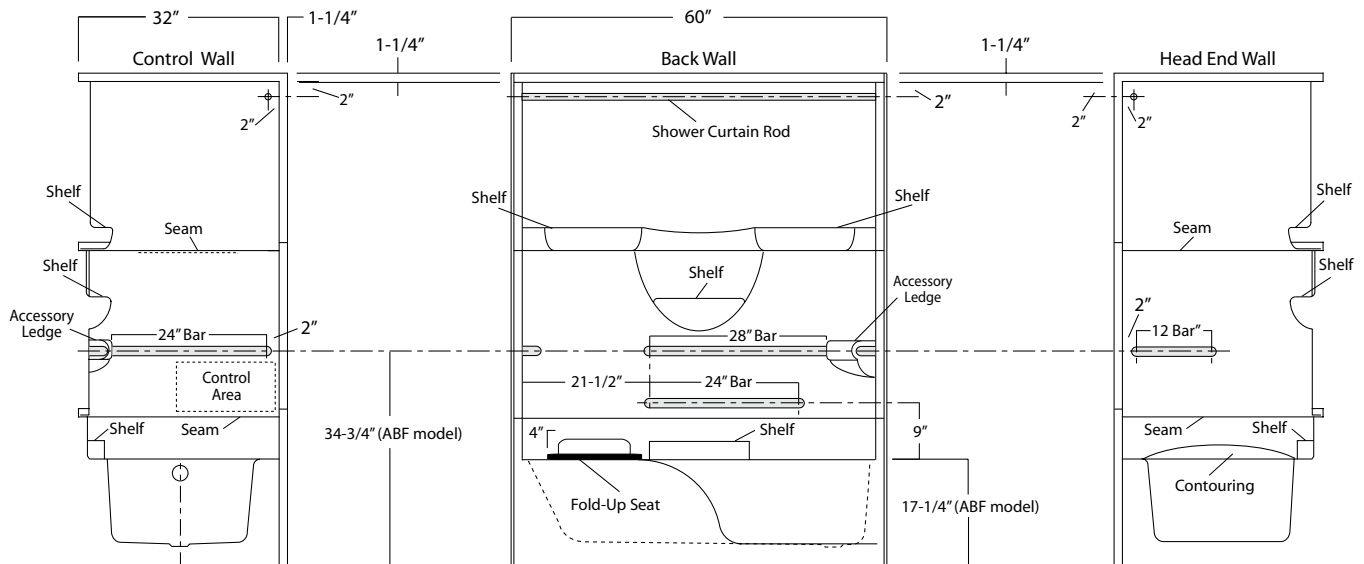
Package Includes: Factory installed folding seat, 1-1/2" dia. stainless steel bars and shower curtain rod in compliance with ANSI-A117.1-1994 (ADA) requirements.

NOTE: ADA94 is a 4-bar package and may NOT meet site regulations. Check installation site regulations for bar compliance requirements.

NOTE: Enhanced reinforcement available, see 3SM & 3SF packages.

NOTE: Shower curtain rod may be deleted upon request without affecting compliance.

NOTE: Use of ABF unit is required for ADA compliance.



Package Order No.: ADA03 (ADA Compliant)

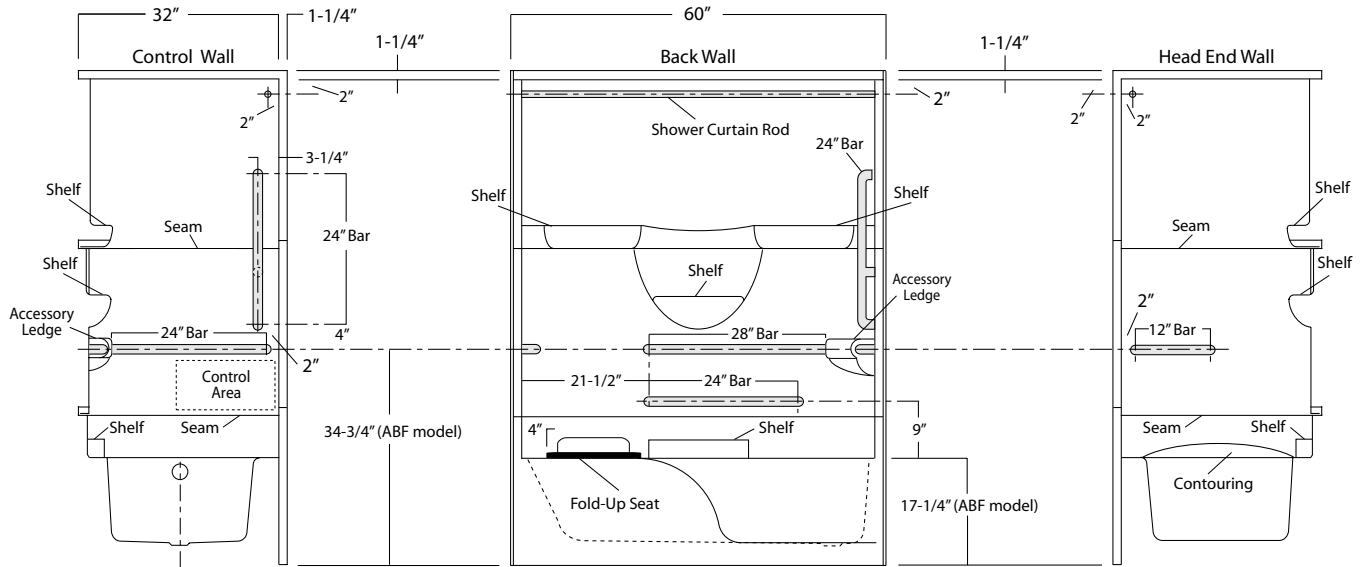
Package Includes: Factory installed folding seat, 1-1/2" dia. stainless steel bars and shower curtain rod in compliance with ANSI-A117.1-2003 (ADA) requirements.

NOTE: ADA03 is a 5-bar package and may exceed site regulations. Check installation site regulations for bar compliance requirements.

NOTE: Enhanced reinforcement available, see 3SM & 3SF packages.

NOTE: Shower curtain rod may be deleted upon request without affecting compliance.

NOTE: Use of ABF unit is required for ADA compliance.



Photographic images may include optional components and appear different than actual product.
 Dimensions shown are maximum. Due to the nature of the materials involved, actual unit dimensions can vary (tolerances: +0 / -3/8 inch).
 Oasis reserves the right to modify or discontinue product and/or associated equipment without prior written or verbal notification or obligation.